

# TECNOMIX

CONCRETE BATCHING & MIXING PLANTS







# TECNOMIX

TECNOMIX concrete batching plants **with mixer** are designed to produce large volumes (30 to 80 m<sup>3</sup>/h) of **high-quality concrete**, for construction sites and infrastructural works of medium and long duration as well as for the sale of concrete to third parties.











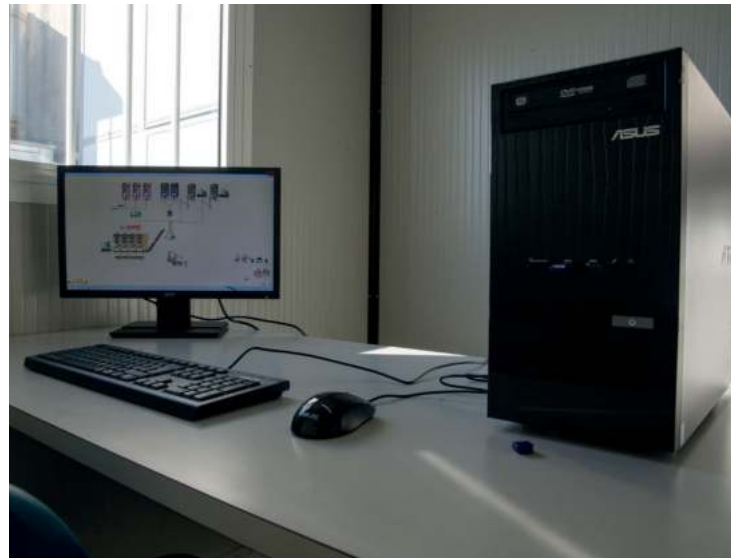
# DOSING AND MIXING

Aggregates, cement, water and additives: TECNOMIX plants are equipped with electronic weighing systems that allow the accurate dosing of all raw materials and the automatic correction of mixing water, ensuring **compliance with the required mix design**. Thanks to the mixers specially designed for concrete it is possible to obtain a **homogeneous, constant and high-performance end product**.



# MANAGEMENT SYSTEM

The management software allows complete, simple and intuitive control of the entire production process. Its main features include **multitasking**, supervision via **animated display**, database management of formulas, customers, work sites, vehicles, shipping documents, consumption, **production reports**, etc., and the management and printing of transport documents according to UNI standards.







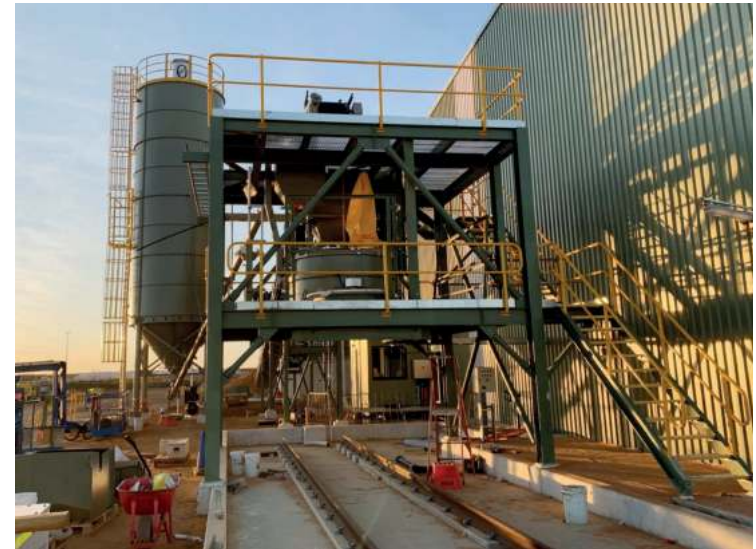






# CEMENT STORAGE

TECNOMIX plants can be combined with **traditional vertical silos** such as monolithic, telescopic and modular panelled silos (models from 15 to 150 m<sup>3</sup>), for a vertical development of the work area, or with **mobile horizontal EUROSIL silos** (models from 15 to 76 m<sup>3</sup>), easily transportable and with low environmental impact.





# TECNOMIX 30•40

CONCRETE BATCHING & MIXING PLANTS





# MAIN FEATURES

- *Concrete production: from **30 to 40 m³/h***
- *Number of bins for aggregates: from 3 up to 5*
- *Mixer: **planetary mixer***
- *Cement storage: horizontal or vertical silos*
- *Size: extremely compact to optimize construction site spaces*
- *Management: software on PC workstation*
- *Safety: compliance with Machine Directive 2006/42/CE*
- *Maintenance: simple and low-cost*





# CONCRETE AND SCREEDS

Thanks to the specially optimised dimensions and technical solutions used, the TECNOMIX 30-40 plants require **minimal space on the construction site**, do not need a loading ramp and can also be installed in city centres, buildings and, more generally, areas with limited space; a *wet/dry kit* also allows the mixer to be bypassed in order to unload the materials (aggregates, cement or anhydrite, water and additives) directly into the truck mixer or into trucks specially equipped for **screed production**.













# AVAILABLE MODELS



MODELS	CONCRETE PRODUCTION	BIN STORAGE CAPACITY	N° OF BINS	LOADING HEIGHT
TECNOMIX 3-30	30 m <sup>3</sup> /h	11 m <sup>3</sup>	3	3,10 m
TECNOMIX 4-30	30 m <sup>3</sup> /h	11 m <sup>3</sup>	4	3,10 m
TECNOMIX 5-30	30 m <sup>3</sup> /h	11 m <sup>3</sup>	5	3,10 m

MODELS	CONCRETE PRODUCTION	BIN STORAGE CAPACITY	N° OF BINS	LOADING HEIGHT
TECNOMIX 3-40	40 m <sup>3</sup> /h	11 m <sup>3</sup>	3	3,10 m
TECNOMIX 4-40	40 m <sup>3</sup> /h	11 m <sup>3</sup>	4	3,10 m
TECNOMIX 5-40	40 m <sup>3</sup> /h	11 m <sup>3</sup>	5	3,10 m



# TECNOMIX 60•80

CONCRETE BATCHING & MIXING PLANTS





# MAIN FEATURES

- Concrete production: **60 to 80 m<sup>3</sup>/h**
- Number of bins for aggregates: from 3 up to 5
- Aggregate bin storage capacity: 25 m<sup>3</sup>
- Mixer: **double shaft horizontal mixer**
- Cement storage: horizontal or vertical silos
- Management: software on PC workstation
- Safety: compliance with Machine Directive 2006/42/CE
- Maintenance: simple and low-cost





# HIGHEST STORAGE CAPACITY

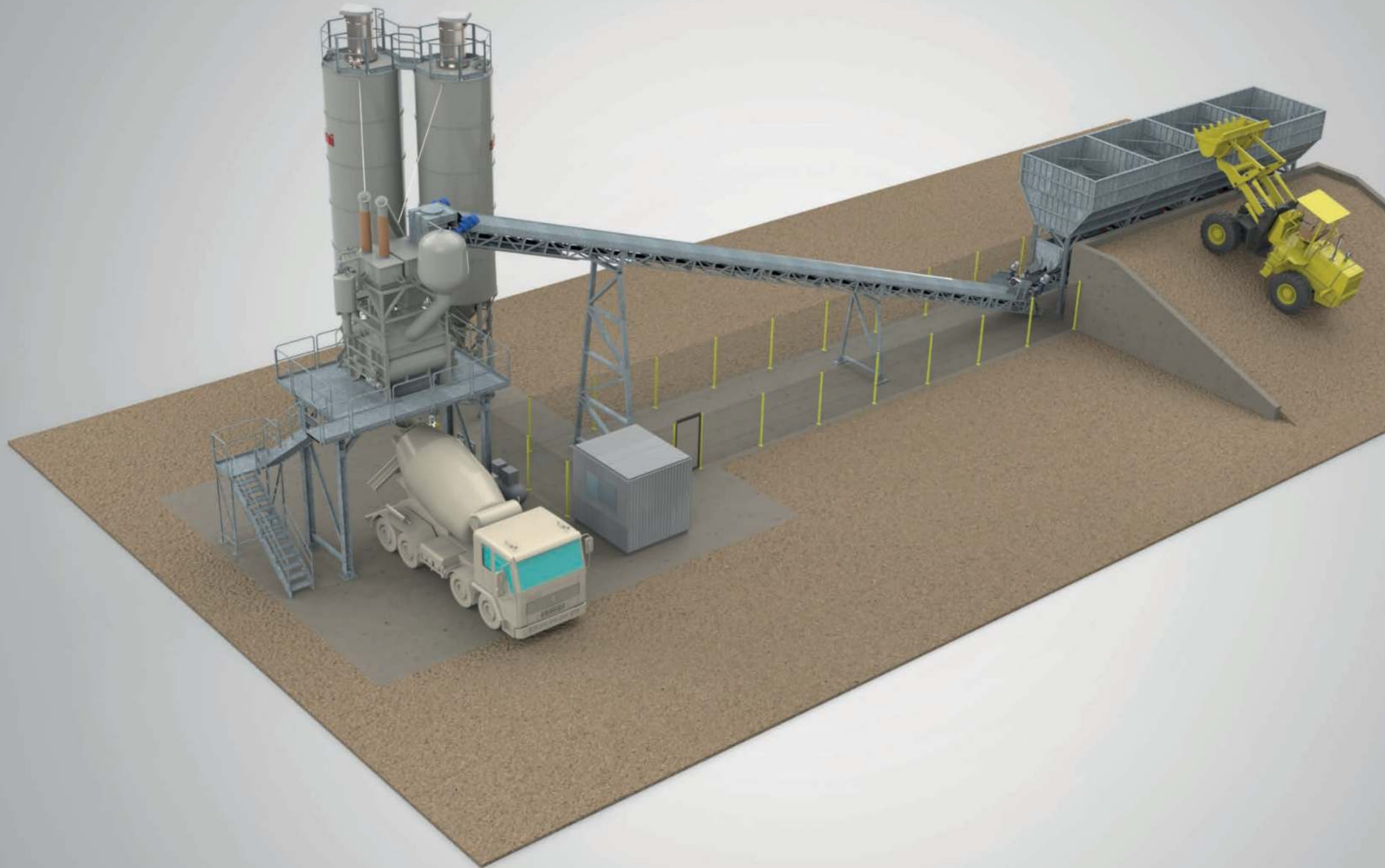
In order to guarantee **maximum autonomy and the best production performance**, TECNOMIX 60-80 concrete plants are equipped with tanks sized for storing large quantities of aggregates (**3 to 5 bins of 25 m<sup>3</sup> each**), high-performance systems for extracting and transporting the materials, and mixers capable of quickly receiving and mixing the components fed into the mix. Despite their size, all models are designed to optimise the overall dimensions during transport by land (by truck) and by sea (by container).













# AVAILABLE MODELS

MODELS	CONCRETE PRODUCTION	BIN STORAGE CAPACITY	N° OF BINS	LOADING HEIGHT
TECNOMIX 3-60	60 m <sup>3</sup> /h	25 m <sup>3</sup>	3	6 m
TECNOMIX 4-60	60 m <sup>3</sup> /h	25 m <sup>3</sup>	4	6 m
TECNOMIX 5-60	60 m <sup>3</sup> /h	25 m <sup>3</sup>	5	6 m

MODELS	CONCRETE PRODUCTION	BIN STORAGE CAPACITY	N° OF BINS	LOADING HEIGHT
TECNOMIX 3-80	80 m <sup>3</sup> /h	25 m <sup>3</sup>	3	6 m
TECNOMIX 4-80	80 m <sup>3</sup> /h	25 m <sup>3</sup>	4	6 m
TECNOMIX 5-80	80 m <sup>3</sup> /h	25 m <sup>3</sup>	5	6 m



## OTHER PRODUCTS



### STORAGE VERTICAL SILOS

Monolithic, telescopic and panelled silos for the storage of powders and granules.



### STORAGE HORIZONTAL SILOS

Horizontal and hook lift silos for storing and dosing powders and granules, as well as loading concrete mixer trucks.



### BAG BREAKING EQUIPMENT

Systems for emptying bags of powder material or granules and bag-breaking hoppers for feeding silos and batching plants.







### **DRY MIXING PLANT**

Plants for the production, storage and distribution of pre-mixed dry mortar.



### **DISSOLUTION PLANTS**

Plants for the preparation of hydrated lime suspensions (milk of lime).



### **SOIL & WASTE TREATMENT**

Plants for the treatment and stabilisation of soil and sludge from various industrial sectors.







**SAMI S.r.l.**

Via Industriale, 18  
52011 - Bibbiena, Arezzo (Italy)  
+39 0575 536366

**info@sami.info**

**www.sami.info**

